



Market closed on July 28, 2016

ICE: CONTRACT	CHANGE	SETTLE
KCU6 - SEPTEMBER 2016	-	142,15
KCZ6 - DECEMBER 2016	-	145,35
KCH7 - MARCH 2017	-	148,30
KCK7 - MAY 2017	-	150,05
KCN7 - JULY 2017	-	151,40

SPREAD: ICE (CTS/LB)	
-3,20	September/December
-2,95	December/March
-1,75	March/May
-1,35	May/July
-9,25	September/July

BM&F: CONTRACT	CHANGE	SETTLE
ICFU16 - SEPTEMBER 2016	-	172,50
ICFZ16 - DECEMBER 2016	-	172,50

ARBITRAGEM: ICE/BM&F (CTS/LB)	
-11,74	September/September
-14,94	December/December

DOL: CONTRACT	CHANGE	SETTLE
DOL COM - DOLAR COMMERCIAL	-	3,2960

1 MINUTE IN THE COFFEE

Brazil Coffee Weather
A Few Coastal Showers Only; Continued Warm

By Drew Lerner

Kansas City, July 29 (World Weather, Inc.) – Limited potential for rainfall is seen for Brazil coffee areas over the next ten days to two weeks. Some coastal showers are expected, but the moisture will not reach very far inland. Temperatures will remain warm, especially in northern production areas.

BRAZIL

No rain fell in Brazil coffee areas Wednesday and conditions remained warm except in areas from Rio de Janeiro and southernmost Sul de Minas into eastern Sao Paulo where a few milder temperatures were noted. Afternoon high temperatures contrasted from the upper teens and lower 20s Celsius in the cooler areas noted above to the range of 28 to 32 further to the north from northernmost Sao Paulo to central Bahia. One location in central Bahia reported a high of 34. Many areas in the heart of Brazil coffee country reported highs in the middle and upper 20s.

No serious change has occurred in the ten day outlook for Brazil's coffee areas today relative to that of Thursday. Very little rain of significance is expected and temperatures will be mild to warm throughout the production region. There will be no threats of frost or freeze conditions. Daily high temperatures through August 7 will be in the upper 20s through the lower 30s Celsius with a few middle 30s possible in the north. In contrast, some periodic readings in the upper teens and lower 20s will occur from northern Parana to Rio de Janeiro into Saturday and again around mid-week next week. Lowest morning temperatures will often range in the teens during the next week to ten days with a few readings in the lower 20s in the far north and a few readings in the upper single digits rarely in the higher elevated areas of southern Sul de Minas.

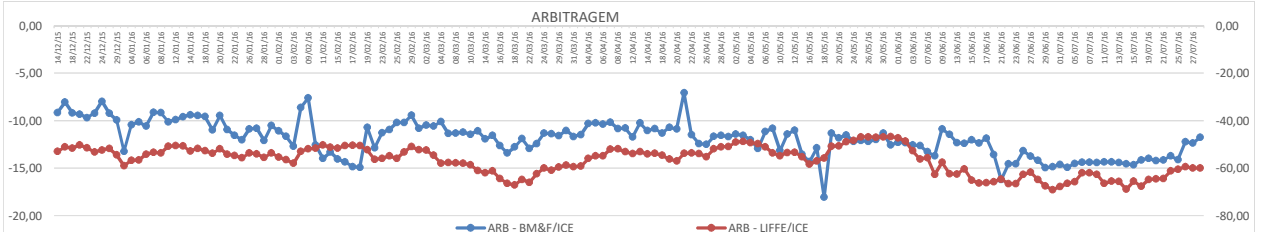
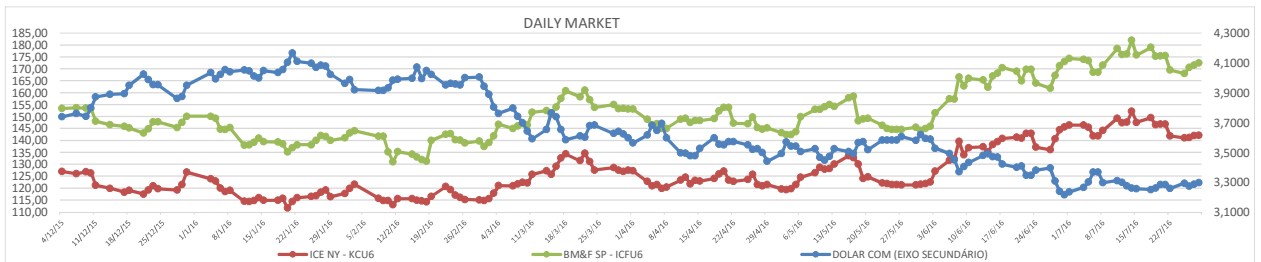
Rain will fall periodically along the coast of Espirito Santo and Bahia through the forecast period. Only a few showers will evolve far enough inland to reach coffee areas and when that happens, resulting rainfall will be minimal.

MARKET	PRICE IDEAS FROM BUYERS	
PADRÃO 0 - CEREJA		R\$ 550,00
PADRÃO 1A - FC CERRADO		R\$ 520,00
PADRÃO 1B - FC SOUTH OF MINAS		R\$ 500,00
PADRÃO 2 - GOOD CUP DURO		R\$ 480,00
PADRÃO 3 - GOOD CUP 2 RIADAS		R\$ 460,00
PADRÃO 4 - DURO RIADO RIO (7/2/1)		R\$ 440,00
PADRÃO 5 - RIO		R\$ 420,00
PADRÃO 6A - CONSUMO 600 DEF DURO		R\$ 420,00
PADRÃO 6B - CONSUMO 600 DEF DURO RIADO RIO		R\$ 410,00

Note: Standar qualities considering 25% of screen 17/18 and 20% of leakage (maximum of 0,5% of impurity), except quality 6A and 6B.

FOB: QUALITY	AUGUST/JUNE
NY 2/3 17/18 FC CERRADO	4
NET SELLER NY 2/3 15/16 FC CERRADO	-1
NY 2/3 14/16 FC CERRADO	-6
NY 2/3 17/18 FC SOUTH OF MINAS	-5
NY 2/3 14/16 FC SOUTH OF MINAS	-12
NY 2/3 17/18 GOOD CUP	-13
NY 3/4 14/16 GOOD CUP	-18
NY 2/3 17/18 GOOD CUP 2 RIOY CUPS	-18
NY 3/4 14/16 GOOD CUP 2 RIOY CUPS	-23
NY 5/6 13UP 300 DEF COB GRINDERS	-26
NY 5/6 12UP 350 DEF COB GRINDERS	-31
NY 2/3 17/18 RIO MINAS (US\$ / 50 KGS)	131
NY 2/3 15/16 RIO MINAS (US\$ / 50 KGS)	126

Obs: Fob ideas considering price ideas from buyers (Simple exercise).



COLABORADORES

ALBERT MIRANDA PAIVA
EDUARDO SOLAR
JESSICA RIBEIRO VALERIO
JOSÉ ANTONIO DOS SANTOS MANGA
KELLY APARECIDA FERREIRA
LEONARDO SERGIO SOARES
MARCOS EDUARDO CLAUDINO
SANDRA GOMES
THALES SARTO
WALLAFE VITOR TAVARES

ASSUNTOS

COMERCIAL
TRAFFIC/CLASSIFICAÇÃO
ADMINISTRATIVO
DIRETOR/QUALIDADE/COMERCIAL
CERTIFICAÇÕES
DIRETOR/ADMINISTRATIVO/FINANCEIRO
TRADING/TRAFFIC
COMERCIAL
CLASSIFICAÇÃO
EMBARQUE
EMBARQUE

SKYPE

-
eduardo.solar.transporte
mcc_adrielle
mangajiao
kelly-ferreira1
lss_82
marco.gxp
marcos.claudino_mangacoffee
sandra.gomes.mangacoffee
-

TELEFONE FIXO

+55 35 3015 5500/+55 35 3214 4379
+55 35 3015 5500/+55 35 3214 4379
+55 35 3015 5500/+55 35 3214 4379
+55 35 3015 5500/+55 35 3214 4379
+55 35 3015 5500/+55 35 3214 4379
+55 35 3015 5500/+55 35 3214 4379
+55 35 3015 5500/+55 35 3214 4379
+55 35 3015 5500/+55 35 3214 4379
+55 35 3015 5500/+55 35 3214 4379
+55 35 3015 5500/+55 35 3214 4379
+55 35 3015 5500/+55 35 3214 4379
+55 35 3015 5500/+55 35 3214 4379

CEL / WHAT'S UP

+55 35 9 8722 3861
+55 35 9 9215 6140
+55 35 9 8879 8923
+55 35 9 8433 3280
+55 35 9 8817 3837
+55 35 9 8893 9033
+55 35 9 8845 2008
+55 35 9 8898 8100
+55 35 9 8834 5601
+55 35 9 8879 8923
+55 35 9 88398466

CEL ADICIONAL

-
-
-
+55 35 9 8879 9169
+55 35 9 8722 3328
-
+55 35 9 8879 9171
+55 35 9 8705 7164
+55 35 9 8868 2541
+55 35 9 9215 0026

Manga Coffee Corporation: Respect, Security and Quality!
Come and make us a visit. It will be a pleasure show you our projects and know your necessities!
Lets drink a cup of coffee! Await you!