



Market closed on August 8, 2016

ICE: CONTRACT	CHANGE	SETTLE
KCU6 - SEPTEMBER 2016	-	141,10
KCZ6 - DECEMBER 2016	-	144,80
KCH7 - MARCH 2017	-	147,95
KCK7 - MAY 2017	-	149,75
KCN7 - JULY 2017	-	151,55

SPREAD: ICE (CTS/LB)	
-3,70	September/December
-3,15	December/March
-1,80	March/May
-1,80	May/July
-10,45	September/July

BM&F: CONTRACT	CHANGE	SETTLE
ICFU16 - SEPTEMBER 2016	-	171,05
ICFZ16 - DECEMBER 2016	-	172,90

ARBITRAGEM: ICE/BM&F (CTS/LB)	
-11,79	September/September
-14,09	December/December

DOL: CONTRACT	CHANGE	SETTLE
DOL COM - DOLAR COMMERCIAL	-	3,1680

1 MINUTE IN THE COFFEE

Brazil Coffee Weather Mid-Week Showers Will Be Brief And Light By Drew Lerner
 Kansas City, August 8 (World Weather, Inc.) – Weekend weather in Brazil coffee areas was not very anomalous. Mostly dry conditions prevailed across the majority of crop areas, although some rain occurred in coastal Bahia. Temperatures trended warmer. This week's weather will bring a few showers to southern coffee areas briefly during mid-week, but resulting rainfall will not be very impressive and temperatures will trend slightly cooler. There is no risk of crop threatening cold for the next two weeks.

BRAZIL

Rain during the weekend was mostly confined to the Bahia Coast and in a few coffee areas immediately inland. Amounts ranged from 2 to 15 millimeters with the greatest rainfall along the coast. Most coffee areas were either dry or experienced a net loss in soil moisture for the period Friday into Sunday afternoon.
 Highest temperatures Friday through Sunday were mostly in the middle 20s to lower 30s Celsius. However, there was one location in southeastern Bahia reporting a reading as cool as 21. The highest reading of 34 degrees occurred in northeastern Minas Gerais. Lowest morning temperatures slipped to the upper single digits in the traditionally coolest areas of Sul de Minas while varying from 11 to 19 in most other areas. A few extremes near 20 occurred along the Bahia coast.
 Mostly dry weather will continue today. Showers will develop in Parana and drift into southwestern Sao Paulo Tuesday before breaking up into isolated scattered showers

in southern Sul de Minas and Rio de Janeiro Wednesday and Thursday. Rainfall in Sul de Minas will vary from 1 to 9 millimeters each day with a possible local total of 15 millimeters near the Rio de Janeiro border. Greater rain will be possible in northern Parana, eastern Sao Paulo and southern Rio de Janeiro where 10 to 25 millimeters may result over the entire forecast period. Coffee areas near Londrina may be locally wetter.

Most of the precipitation in Brazil will become insignificant Friday through Monday, August 15, although a few showers will occur along the coast from Espirito Santo to Bahia each day. Resulting rainfall will be light varying from 1 to 13 millimeters each day and very little of the moisture will reach inland to key crop areas.

Another round of precipitation will reach Parana and southwestern Sao Paulo August 16-19, but the advertised rainfall is too great and future model runs are likely to diminish the rainfall to light scattered showers that should not have much impact on coffee.

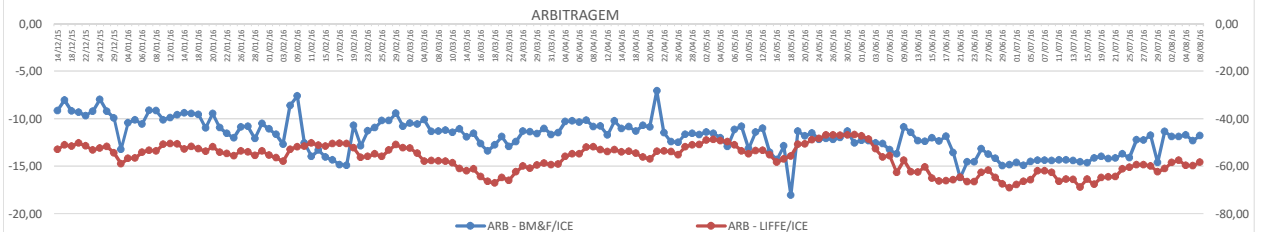
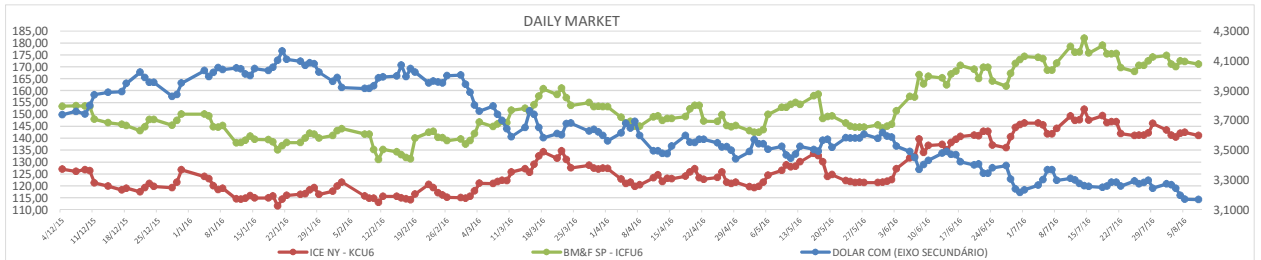
Temperatures will trend slightly cooler during mid- to late week this week, but readings will not drop below average. High temperatures early this week will be similar to the weekend with readings in the middle 20s to lower 30s most common. A few warmer readings will occur in the north. Lowest temperatures early this week will be 11 to 20. Late week high temperatures will cool to the 20s south and upper 20s and lower 30s north while lows at night are mostly in the upper single digits and teens with a few warmer readings in the far north. Another brief bout of cooling is expected during mid- to late week next week, but there will be no threatening cold.

MARKET	PRICE IDEAS FROM BUYERS	
PADRÃO 0 - CEREJA		R\$ 550,00
PADRÃO 1A - FC CERRADO		R\$ 525,00
PADRÃO 1B - FC SOUTH OF MINAS		R\$ 505,00
PADRÃO 2 - GOOD CUP DURO		R\$ 485,00
PADRÃO 3 - GOOD CUP 2 RIADAS		R\$ 465,00
PADRÃO 4 - DURO RIADO RIO (7/2/1)		R\$ 445,00
PADRÃO 5 - RIO		R\$ 425,00
PADRÃO 6A - CONSUMO 600 DEF DURO		R\$ 435,00
PADRÃO 6B - CONSUMO 600 DEF DURO RIADO RIO		R\$ 425,00

Note: Standar qualities considering 25% of screen 17/18 and 20% of leakage (maximum of 0,5% of impurity), except quality 6A and 6B.

FOB: QUALITY	AUGUST/JUNE
NY 2/3 17/18 FC CERRADO	10
NY 2/3 15/16 FC CERRADO	5
NY 2/3 14/16 FC CERRADO	-0
NY 2/3 17/18 FC SOUTH OF MINAS	1
NY 2/3 14/16 FC SOUTH OF MINAS	-6
NY 2/3 17/18 GOOD CUP	-7
NY 3/4 14/16 GOOD CUP	-12
NY 2/3 17/18 GOOD CUP 2 RIOY CUPS	-13
NY 3/4 14/16 GOOD CUP 2 RIOY CUPS	-18
NY 5/6 13UP 300 DEF COB GRINDERS	-17
NY 5/6 12UP 350 DEF COB GRINDERS	-22
NY 2/3 17/18 RIO MINAS (US\$ / 50 KGS)	137
NY 2/3 15/16 RIO MINAS (US\$ / 50 KGS)	132

Obs: Fob ideas considering price ideas from buyers (Simple exercise).



COLABORADORES

ALBERT MIRANDA PAIVA
 EDUARDO SOLAR
 JESSICA RIBEIRO VALERIO
 JOSÉ ANTONIO DOS SANTOS MANGA
 KELLY APARECIDA FERREIRA
 LEONARDO SERGIO SOARES
 MARCO ANTONIO SMARGIASSI
 MARCOS EDUARDO CLAUDINO
 SANDRA GOMES
 THALES SARTO
 WALLAFE VITOR TAVARES

ASSUNTOS

COMERCIAL
 TRAFFIC/CLASSIFICAÇÃO
 ADMINISTRATIVO
 DIRETOR/QUALIDADE/COMERCIAL
 CERTIFICAÇÕES
 DIRETOR/ADMINISTRATIVO/FINANCEIRO
 TRADING/TRAFFIC
 COMERCIAL
 CLASSIFICAÇÃO
 EMBARQUE
 EMBARQUE

SKYPE

-
 eduardo.solar.transporte
 mcc_adrielle
 mangajoao
 kelly-ferreira1
 lss_82
 marco.gxp
 marcos.claudino_mangacoffee
 sandra.gomes.mangacoffee
 -
 -

TELEFONE FIXO

+55 35 3015 5500/+55 35 3214 4379
 +55 35 3015 5500/+55 35 3214 4379
 +55 35 3015 5500/+55 35 3214 4379
 +55 35 3015 5500/+55 35 3214 4379
 +55 35 3015 5500/+55 35 3214 4379
 +55 35 3015 5500/+55 35 3214 4379
 +55 35 3015 5500/+55 35 3214 4379
 +55 35 3015 5500/+55 35 3214 4379
 +55 35 3015 5500/+55 35 3214 4379
 +55 35 3015 5500/+55 35 3214 4379
 +55 35 3015 5500/+55 35 3214 4379
 +55 35 3015 5500/+55 35 3214 4379
 +55 35 3015 5500/+55 35 3214 4379

CEL. / WHAT'S UP

+55 35 9 8722 3861
 +55 35 9 9215 6140
 +55 35 9 8879 8923
 +55 35 9 8433 3280
 +55 35 9 8817 3837
 +55 35 9 8893 9033
 +55 35 9 8845 2008
 +55 35 9 8898 8100
 +55 35 9 8834 5601
 +55 35 9 8879 8923
 +55 35 9 8839 4466

CEL. ADICIONAL

-
 -
 -
 +55 35 9 8879 9169
 -
 +55 35 9 8722 3328
 -
 +55 35 9 8879 9171
 +55 35 9 8705 7164
 +55 35 9 8868 2541
 +55 35 9 9215 0026

Manga Coffee Corporation: Respect, Security and Quality!
 Come and make us a visit. It will be a pleasure show you our projects and know your necessities!
 Lets drink a cup of coffee! Await you!